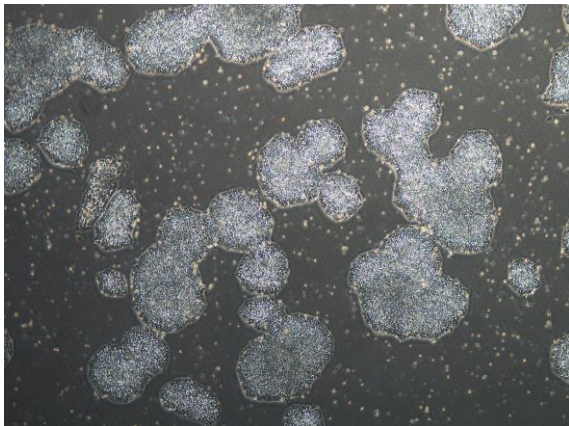
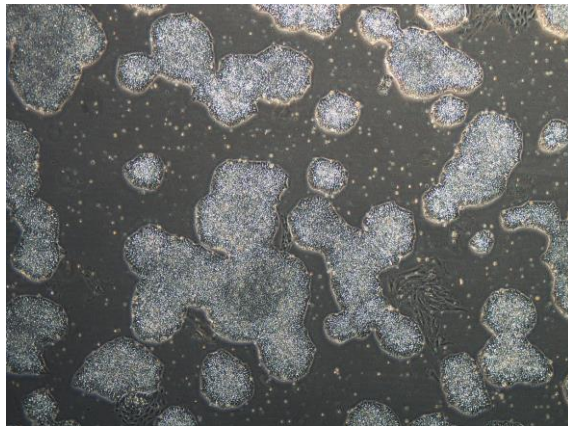


【 CiRA-j-1018 】 Morphology of iPSC colonies

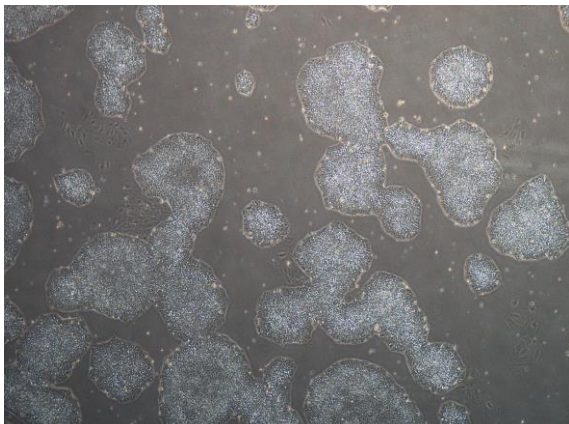
CiRA-j-1018-A: passage-2



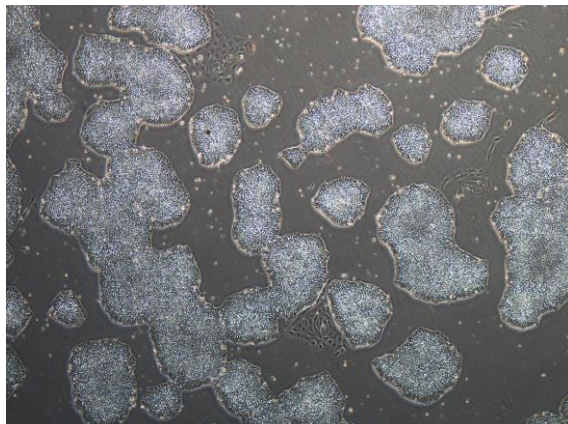
CiRA-j-1018-B: passage-2



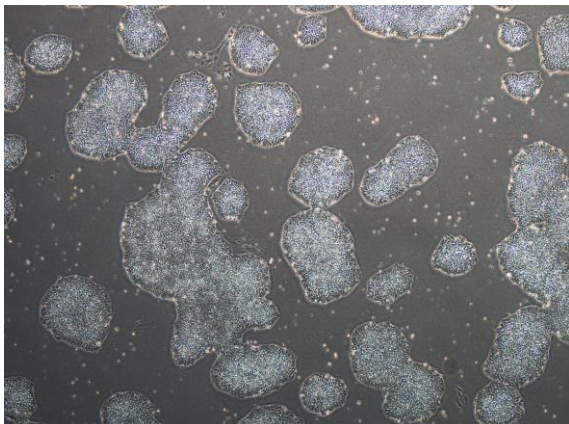
CiRA-j-1018-C: passage-2



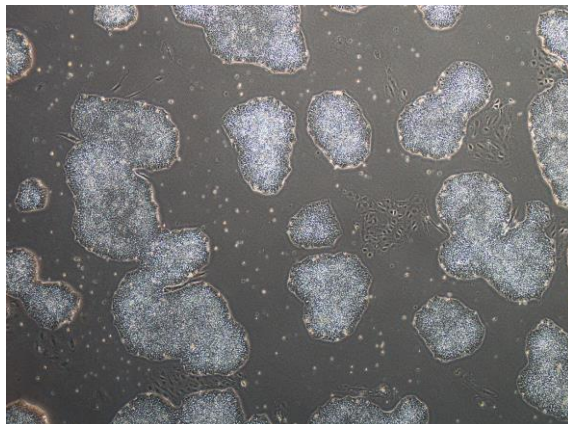
CiRA-j-1018-D: passage-2



CiRA-j-1018-E: passage-2



CiRA-j-1018-F: passage-2



(All images were captured at 4x magnification)